

PACKET POWER

Main Space Name	2014 Apr 1 0:00	2014 Apr 1 0:00 - 2014 May 1 0:00	2014 May 1 0:00	2014 May 1 0:00 - 2014 Jun 1 0:00
100000000001A	Energy 521618.43 kWh	Energy 700.20 kWh	Energy 522409.24 kWh	Energy 816.88 kWh
200000000002	Energy 521608.05 kWh	Energy 700.56 kWh	Energy 522398.82 kWh	Energy 816.73 kWh
300000000003	Energy 521610.93 kWh	Energy 700.81 kWh	Energy 522402.08 kWh	Energy 816.75 kWh
400000000004	Energy 521615.13 kWh	Energy 700.84 kWh	Energy 522406.88 kWh	Energy 816.48 kWh
500000000005	Energy 521608.61 kWh	Energy 700.59 kWh	Energy 522397.72 kWh	Energy 816.87 kWh
600000000006	Energy 521612.34 kWh	Energy 700.55 kWh	Energy 522403.57 kWh	Energy 817.09 kWh
700000000007	Energy 521608.65 kWh	Energy 700.34 kWh	Energy 522399.54 kWh	Energy 817.02 kWh
800000000008	Energy 521618.42 kWh	Energy 700.49 kWh	Energy 522408.61 kWh	Energy 816.94 kWh
900000000009	Energy 521611.99 kWh	Energy 700.33 kWh	Energy 522402.88 kWh	Energy 816.90 kWh
A00000000010	Energy 521614.56 kWh	Energy 700.70 kWh	Energy 522405.87 kWh	Energy 816.98 kWh
B00000000011	Energy 521619.32 kWh	Energy 700.58 kWh	Energy 522410.61 kWh	Energy 816.85 kWh
C00000000012	Energy 521623.98 kWh	Energy 700.51 kWh	Energy 522411.17 kWh	Energy 817.11 kWh
D00000000013	Energy 521625.84 kWh	Energy 700.48 kWh	Energy 522407.68 kWh	Energy 816.82 kWh
Diada	Energy 6255964.22 kWh	Energy 8486.20 kWh	Energy 6268857.34 kWh	Energy 9802.36 kWh
000000000000	Energy 521616.48 kWh	Energy 780.48 kWh	Energy 522407.68 kWh	Energy 816.82 kWh



ENERGY AND ENVIRONMENTAL MONITORING

Seamlessly integrates monitoring hardware, wireless networking, analysis and reporting into a ready to run system.

MONITORING AND ANALYSIS MADE EASY: The EMX energy portal makes it easy to access detailed power and environmental information. Using any web browser, you can quickly see your top level or detailed power and environmental data, available power infrastructure, examine usage trends across time and more. EMX also simplifies energy cost allocation and reporting with an array of standard and customizable reports.

CLOSELY INTEGRATED HARDWARE AND SOFTWARE: Packet Power provides a true end to end “plug and play” experience with a self configuring wireless network that effortlessly integrates with the EMX monitoring system. From the moment you energize monitors the EMX portal will automatically recognize new devices and make the data available.

THE SMART ALTERNATIVE : EMX can be online and commissioned in fraction of the time and cost of conventional BMS and DCIMs while still delivering the critical information you need to operate and optimize your data center. EMX can run as a cloud application or locally as well as operate simultaneously with conventional building management systems. See why so many enterprise customers choose EMX.

Information that delivers real value and operating efficiencies:

- ▶ Optimize available power per circuit without the risk of tripping circuits
- ▶ Generate energy savings by increasing ambient temperature while safely knowing your peak rack temperature
- ▶ Monitor and optimize air flow using low cost strategically placed pressure sensors
- ▶ Ensure compliance with customer contracts using easy to run reports
- ▶ Maintain uptime by setting policies that ensure safe operating parameters
- ▶ Accurately allocate costing by user and improve billing accuracy
- ▶ Increase PUE resolution to better gauge operating efficiency efforts
- ▶ Automate reporting and time consuming manual measurements

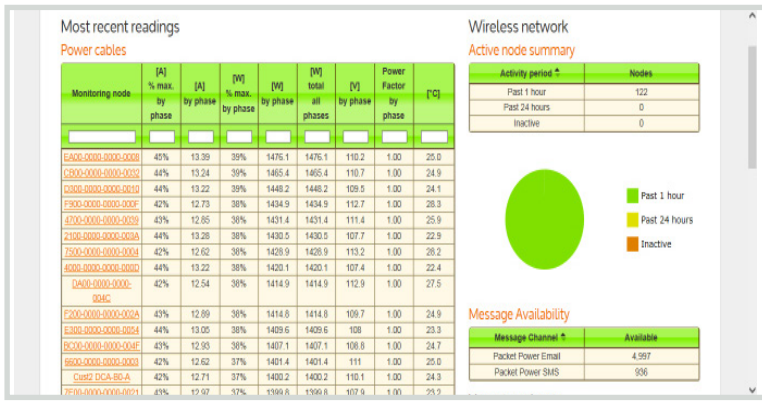
FEATURES

- ▶ Real-time power and environmental information from facility wide to device resolution
- ▶ Ready to run - no costly commissioning and integration expenses
- ▶ Supports thousands of monitoring points across multiple facilities
- ▶ Multi-company support; separate access to information for different parts of your company or customer sets
- ▶ Use as-is or customize reports, dashboards, languages and alerts
- ▶ Accessible from any web browser
- ▶ Cloud based or locally installed
- ▶ Proven globally in enterprise and co-location environments

FUNCTIONS

- ▶ Set policies and receive alerts via email or SMS
- ▶ Create custom dashboards viewable as web pages
- ▶ 3D thermal maps
- ▶ Detailed reporting capabilities
- ▶ Dynamic charting and trending functions of real time and historical data
- ▶ Export data in universal formats
- ▶ Track energy usage, costing and CO₂ emissions
- ▶ Create realistic data center diagrams and view information from a facility to device level

SYSTEM OVERVIEW

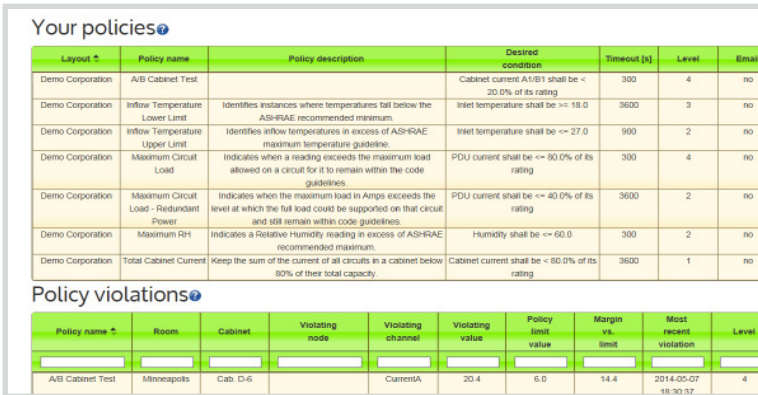


Easy to see system wide overviews: View all devices being monitored by type, location, or grouping along with system status from a central dashboard.

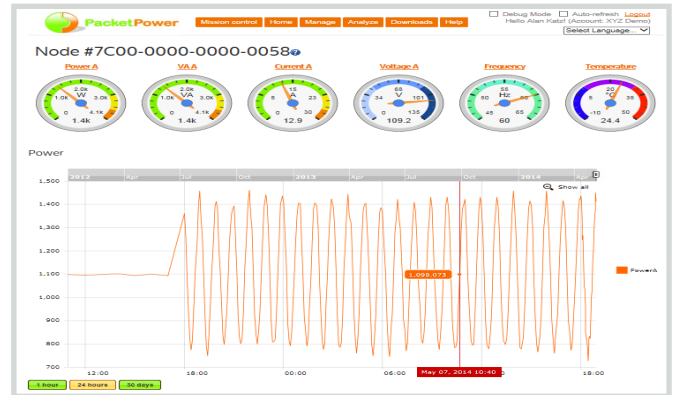
Energy Use and Cost by Device

Monitoring node	OK?	Energy used last 24h by phase [kWh]	Energy used last 24h total [kWh]	Energy cost last 24h [€]	Energy used last 365 days [kWh]	Energy cost last 365 days [€]	Energy used last yr [kWh]	Energy cost last yr [€]
5000-0000-0000-3027	OK	2.7	2.7	0.27	79.4	7.94	967	96.70
5000-0000-0000-3027	OK	14.1	14.1	1.41	400.4	40.04	40.4	4.04
5000-0000-0000-3027	OK				1023.9	102.39	1253	125.30
5000-0000-0000-3027	OK	48.2	48.2	4.82	1486.9	148.69	1654.9	165.49
5000-0000-0000-3027	OK		34.5	3.45	A 403.9	40.39	A 5457.0	545.70
					B 297.9	29.79	B 3603.6	360.36
					C 352.2	35.22	C 4526.9	452.69
5000-0000-0000-3113	OK	30	30.0	3.00	902.2	90.22		
5000-0000-0000-3113	OK	A 10.9	30.4	3.04	A 308.8	30.88	A 3466.3	346.63
		B 10.9			B 323.9	32.39	B 3685.5	368.55
		C 8.6			C 244.9	24.49	C 3100.2	310.02
5000-0000-0000-2134	OK	6.9	6.9	0.69	224.2	22.42	288.9	28.89
5000-0000-0000-2094	OK	24.1	24.1	2.41	719.2	71.92	1104.9	110.49
5000-0000-0000-2094	OK				A 187.1	18.71	A 2431.0	243.10
					B 293.7	29.37	B 3688.1	368.81
					C 108.8	10.88	C 1375.1	137.51
5000-0000-0000-3344	OK	11.5	11.5	1.15	377.8	37.78	4730.1	473.01
5000-0000-0000-3344	OK	50.8	50.8	5.08	1514.2	151.42	1904.2	190.42
5000-0000-0000-3344	OK	44.5	44.5	4.45	1392.3	139.23	1430.9	143.09
5000-0000-0000-3520	OK	35.9	35.9	3.59	1078.7	107.87	1327.6	132.76
5000-0000-0000-3520	OK	0.2	0.2	0.02	89.1	8.91	1370.7	137.07
5000-0000-0000-3520	OK	0.7	0.7	0.07	171.1	17.11	1711	171.11
5000-0000-0000-3520	OK	A 6.4	10.4	1.04	A 178.8	17.88	A 1989.9	198.99
		B 3.9			B 110.6	11.06	B 1185.2	118.52
		C 0.0			C 0.1	0.1	C 1.6	0.16

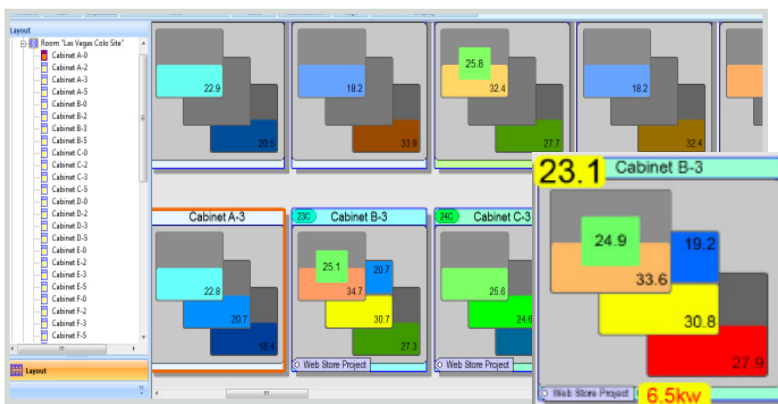
Simplify your reporting: Create energy usage and environmental reports by user, location or device along using the many standard reports or create a custom report. Report information can also be exported into universal formats.



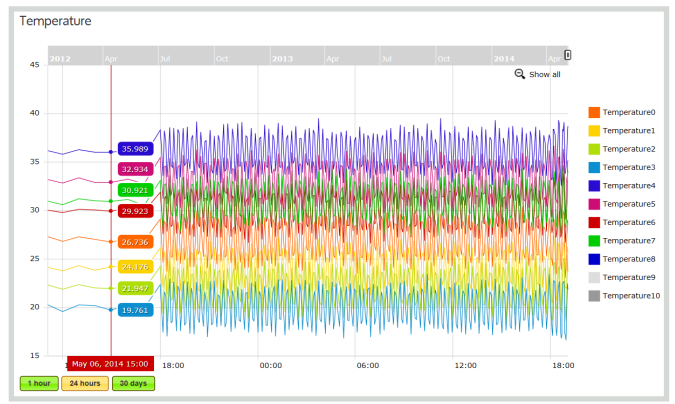
Set Policies to ensure your operating parameters: Define your policy parameters to keep your operating environment in check; any violations are logged and also can trigger email or text alerts.



Create custom dashboard web pages: Any information can be assigned to a custom dashboard which will have a unique URL and can be viewed as a web page for "at a glance" status checks.



Active Facility Maps: Create accurate facility maps to mimic data center layouts and get detailed information down to the cabinet level including 3D temperature maps, rack and device level power consumption and more.



Charting and Trending: Any parameter can be presented graphically to show historical or real time data and assist in data analysis.

Packet Power
 2716 Summer St. NE, Minneapolis, MN 55413 USA
 Tel: 877-560-8770 - Fax: 866-324-2511
 www.packetpower.com